



Willoughby Road NW3

Parkheath
Sold on Service





Willoughby Road, NW3, Asking Price £875,000, Leasehold

Camden Band E

- An excellent 2 bedroom, 2 bathroom garden flat
- Set in the heart of Hampstead Village and next to Hampstead Heath
- In this pretty red brick period house
- Sole use of 11' rear patio with own private entrance
- 18' reception with wood floors and feature fireplace
- 15' main bedroom with built-in wardrobes
- 8' second bedroom with en suite shower room
- 11' tiled kitchen
- 125 years from December 1995
- Prime position with easy access to all Hampstead amenities and underground station

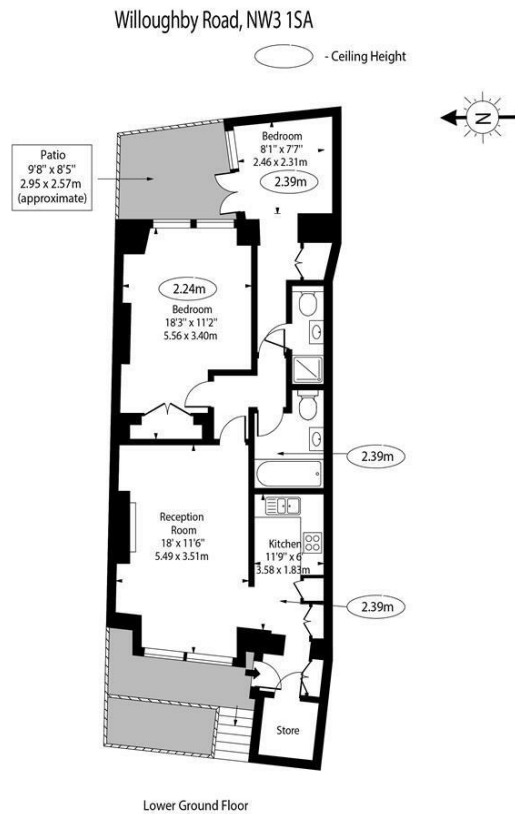
Belsize Park/Hampstead
208 Haverstock Hill
NW3 2AG
Sales 020 7431 1234
Lettings 020 7431 3104
nw3@parkheath.com

South/West Hampstead
192 West End Lane
NW6 1SG
Sales & Lettings
Tel 020 7794 7111
192@parkheath.com

Kensal Rise
54-56 Chamberlayne Rd
NW10 3JH
Tel 020 8960 4845
kensal@parkheath.com

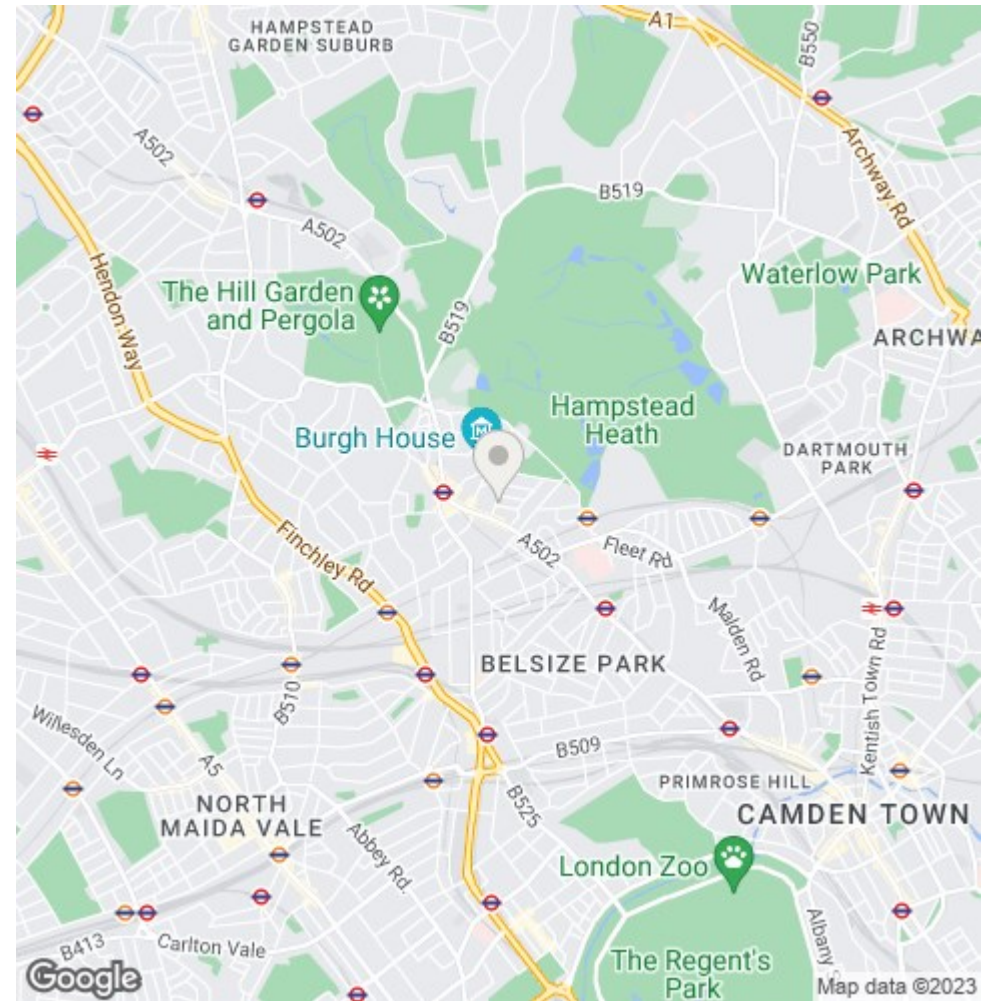
Property Management
192 West End Lane
NW6 1SG
020 7433 6174
pm@parkheath.com

www.parkheath.com



Approx Gross Internal Area 746 Sq Ft - 69.31 Sq M

For Illustration Purposes Only - Not To Scale Floor Plan by www.nogaphotostudio.com Ref: No.46934
 This floor plan should be used as a general outline for guidance only. Any intending purchaser or lessee should satisfy themselves by inspection, searches, enquiries and full survey as to the correctness of each statement. Any areas, measurements or distances quoted are approximate and should not be used to value a property or be the basis of any sale or let.



The particulars do not constitute part of an offer or contract. The particulars, including text, photographs and plans, are for the guidance only of prospective purchasers/tenants and must not be relied upon as statements of fact. The descriptions provided therein represent the opinion of the author and whilst given in good faith should not be construed as statements of fact. Nothing in these particulars shall be deemed a statement that the property is in good condition or otherwise or that any services or facilities are in good working order. All measurements are approximate